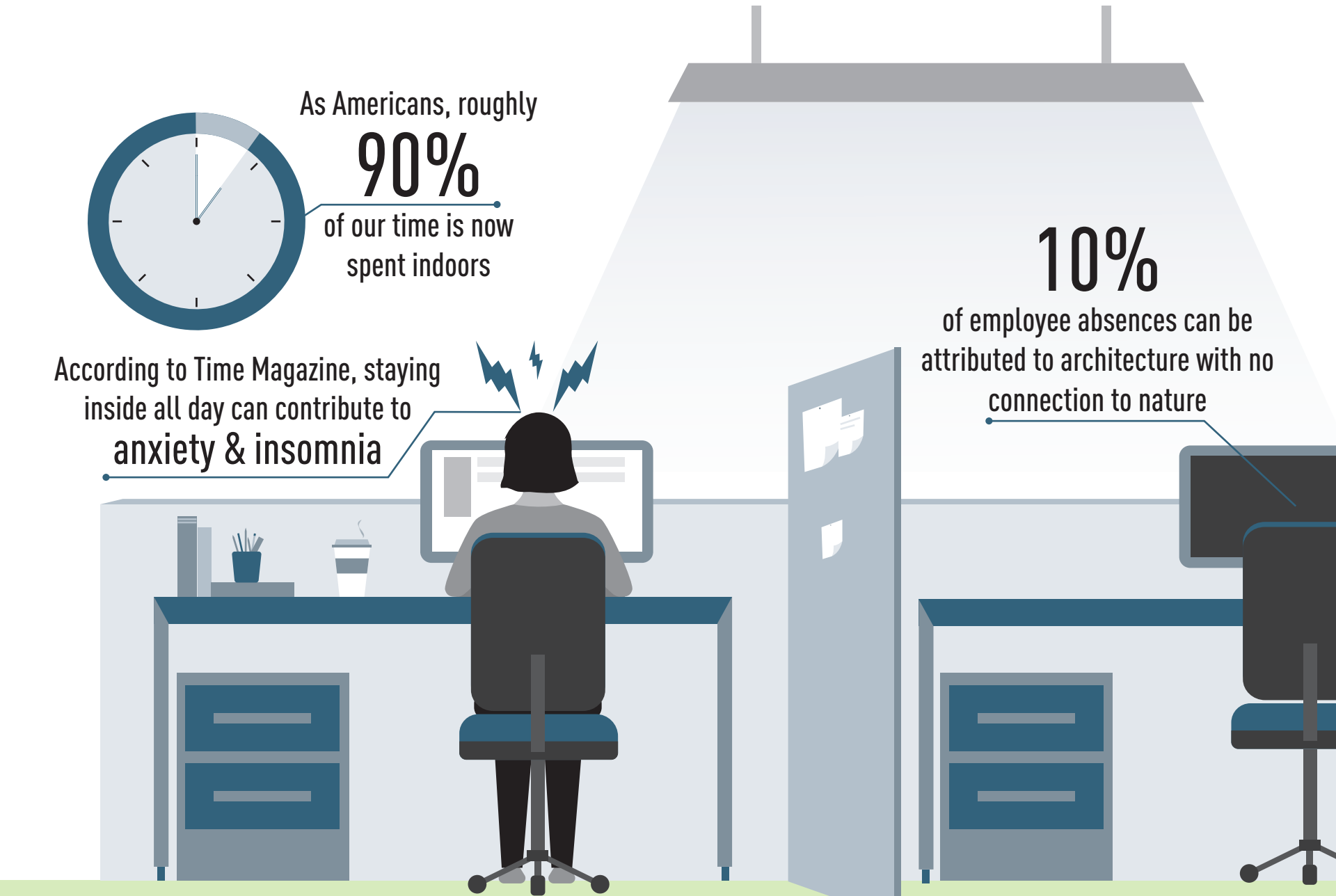


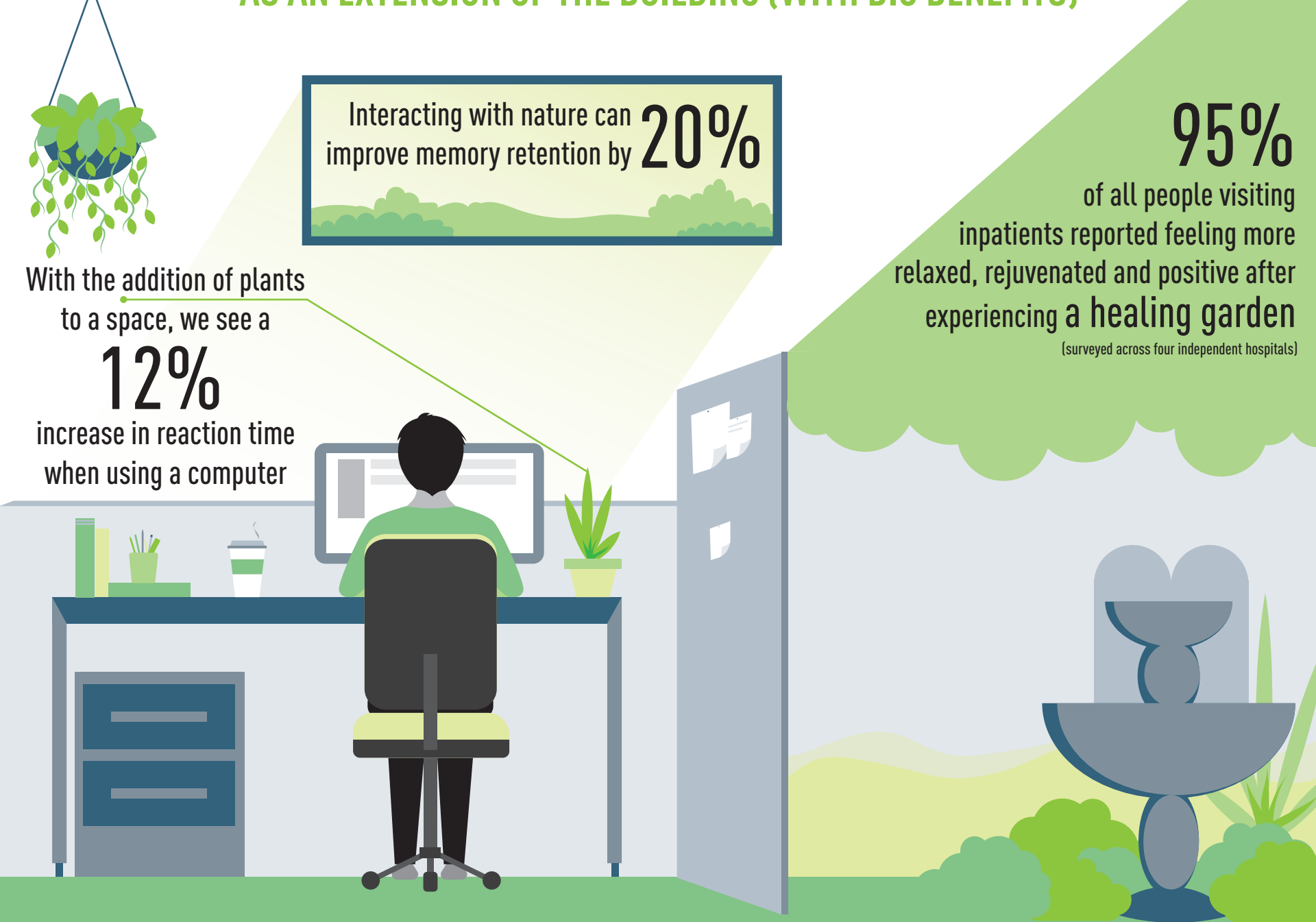


## WHY YOU SHOULD TAKE ADVANTAGE OF YOUR OUTDOOR SPACE

### WE SPEND A LOT OF TIME INDOORS, AND THIS CAN HAVE A SERIOUS IMPACT ON OUR LIVES



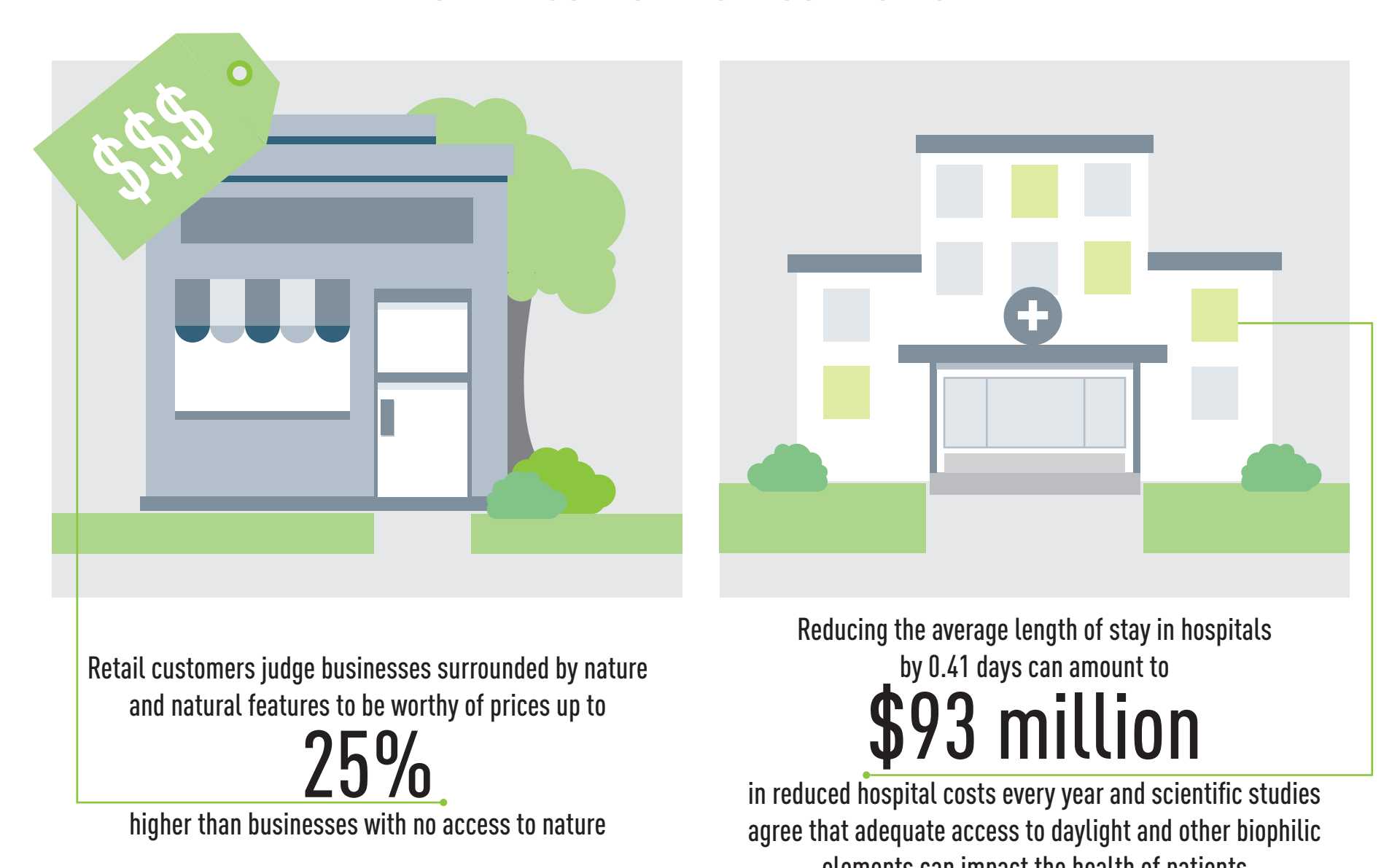
### INTENTIONAL DESIGN OF OUTDOOR SPACES CAN FUNCTION AS AN EXTENSION OF THE BUILDING (WITH BIG BENEFITS)



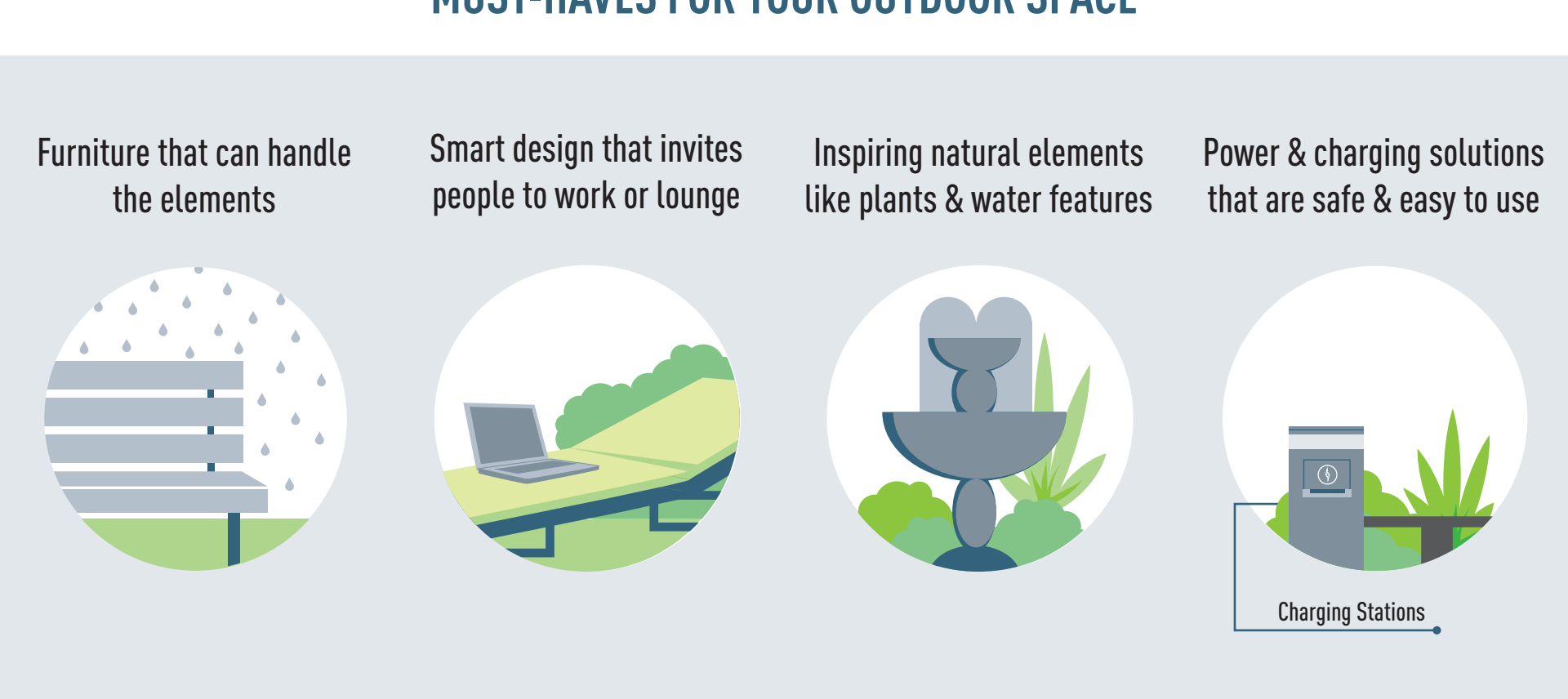
In a 2012 survey of 100 directors and architects of assisted-living residences,

**82%** agreed that  
“the design of outdoor spaces should be one of the most important considerations in the design”

### OUTDOOR SPACES NOT ONLY CONTRIBUTE TO OUR HEALTH, THEY CAN ALSO INCREASE YOUR BOTTOM LINE



### MUST-HAVES FOR YOUR OUTDOOR SPACE



### EARN LEED® POINTS FOR PRODUCTIVITY-ENHANCING OUTDOOR AREAS



LEED's open space credit offers one point for any outdoor spaces that "enable site users to be productive." To meet this requirement, you can add easy access to power, data and A/V connections throughout your outdoor space. Additionally, consider unique, strategically placed lighting controls and a thoughtful acoustic design.

To learn more about outdoor power solutions, like CHARGING STATIONS, VISIT **LEGRAND.US/OUTDOOR**



#### SOURCES

<https://www.buildinggreen.com/blog/we-spend-90-our-time-indoors-says-who>

<http://time.com/4306455/stress-relief-nature/>

Elzeyadi, I. "Daylighting-Bias and Biophilia: Quantifying the Impacts of Daylight on Occupants Health." In: Thought and Leadership in Green Buildings Research. Greenbuild 2011 Proceedings. Washington, DC: USGBC Press. 2011.

2008 Michigan <http://ns.umich.edu/new/releases/6892>

<https://www.naava.io/science/interior-plants-may-improve-worker-productivity-and-reduce-stress-in-a-windowless-environment>

Marcus, Clare C., and Marni Barnes. "Gardens in Healthcare Facilities: Uses, Therapeutic Benefits, and Design Recommendation." University of California at Berkeley. The Center for Health Design. 1995.

2012 Scientific American <https://www.scientificamerican.com/article/nature-that-nurtures/>

Wolf, K.L. "Trees in the small city retail business district: comparing resident and visitor perceptions." Journal of Forestry 103, 390-395. 2005.

Ulrich, R. S. "View through a window may influence recovery from surgery" Science, Vol. 224. 1984.

LEED®, and its related logo, is a trademark owned by the U.S. Green Building Council® and is used with permission. LEED® is the preeminent program for the design, construction, maintenance and operations of high-performance green buildings.