

## Twist, Flow and Go!

# TwistFlow™

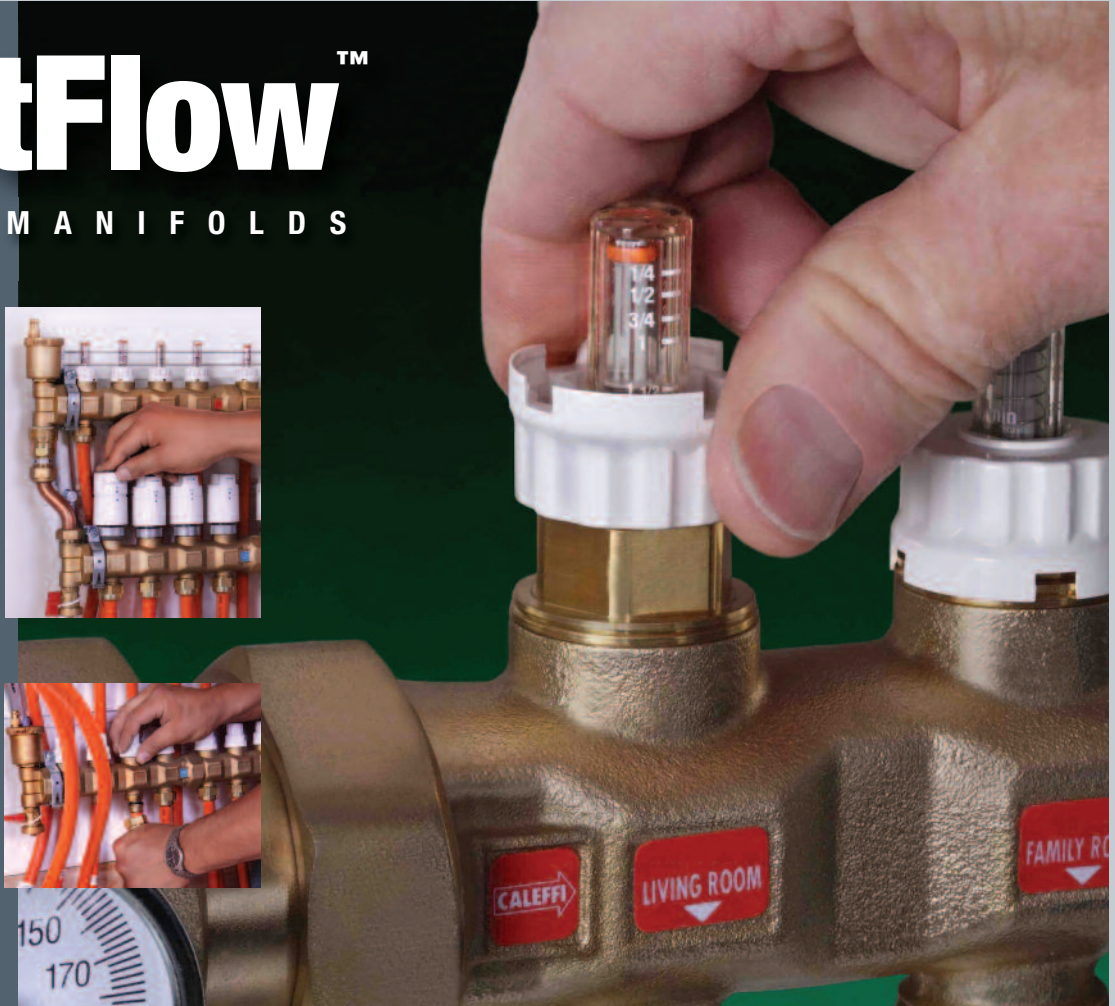
## RADIANT MANIFOLDS

“The TwistFlow manifolds with built-in sight-flow meters and optional snap-on thermometers make it easy for us to check the temperature and adjust for flow the first time with accuracy, resulting in more profitable projects and happier customers.”

*John Palecek,  
Energy/Technical Consultant,  
Smart Solutions, Inc.,  
Kamiah, Idaho*

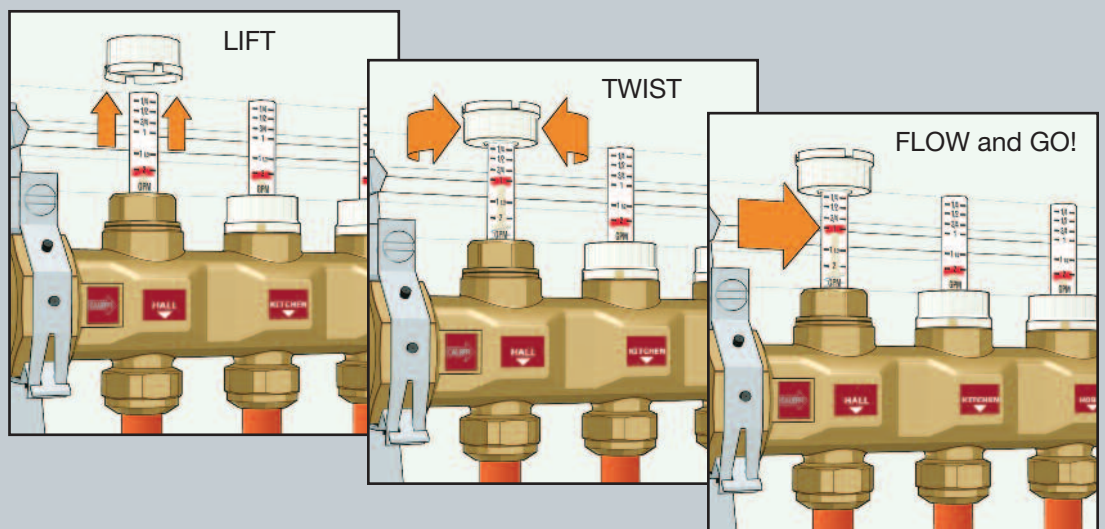
“Easy to adjust flow, balancing between longer and shorter loops off your manifold on system setup. A great innovation!”

*Rich Riddle, Owner,  
Riddle Mechanical,  
Kittredge, Colorado*



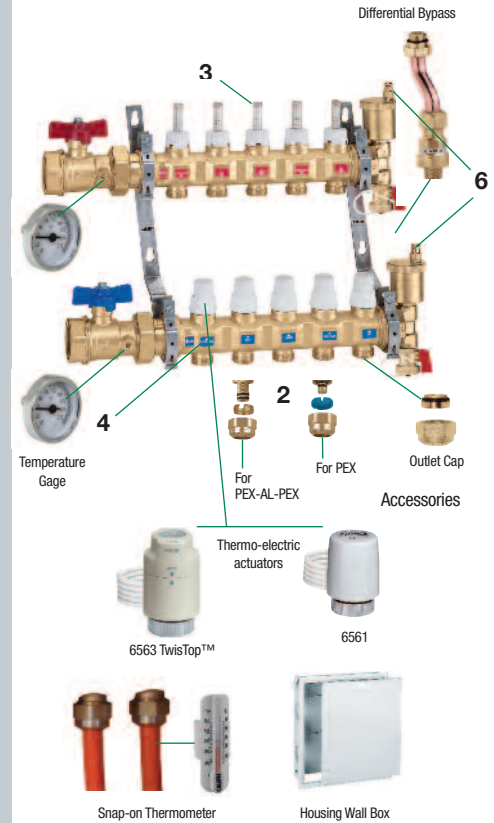
### TwistFlow Easy fingertip balancing—

Adjustable balancing valves with 1/4 to 2 gpm flow meter scale. Simply twist the sight-flow meter to adjust and instantly verify circuit flow.



# Caleffi TwistFlow Advantages

- **1. Out of the box on to the Wall** — Manifolds are factory pre-assembled and pressure tested.
- **2. Universal compression fittings** — 680 series fittings are compatible with all PEX pipe brands meeting ASTM F876 dimensional standards; 682 series fittings are compatible with all PEX-AL-PEX pipe brands meeting ASTM F1281 dimensional standards.
- **3. Built-in sight-flow meters integrated with adjustable balancing valves:**
  1. Simplifies circuit calibration without cumbersome reference graphs.
  2. Allows accurate 1/4 to 2 gpm flow rate adjustment to each circuit by simply reading the flow rate on the integral graduated scale.
  3. Determine actual btu output per zone with the optional snap-on thermometer.
- **4. One-piece casting design** — Superior leak resistance
- **5. Distinctive curved manifold shape results in:**
  1. PEX nesting for flush in-wall mounting.
  2. Constant cross-sectional area for negligible pressure loss and high flow with less noise and smaller pump requirement compared to straight extruded designs.
- **6. Pre-assembled with Automatic Air Vents** — Air vents have hygroscopic caps that close when water is near the vent preventing water from spitting.
- **7. Complete line of accessories** — Flexible field installation to meet any radiant system need.



## TwistFlow— Pre-assembled, Easy to Install and Balance

### Feature Comparison

| Features   | Caleffi TwistFlow™ | Uponor TruFLOW™ Jr.         | Zurn Accuflow® QHPM-        | Viega ProRadiant™ | Rehau Pro-Balance®          | Watts Radiant CazzBrass™ | The Caleffi Advantage   |
|--|--------------------|-----------------------------|-----------------------------|-------------------|-----------------------------|--------------------------|---|
| Factory pressure-tested single piece cast brass supply and return manifolds  | ■                  | —                           | —                           | —                 | —                           | —                        | Exclusive high-quality construction with less potential leak points compared to extruded designs  |
| Built-in Sight Flow Meters integrated with adjustable circuit balancing valves   | ■                  | —                           | —                           | —                 | —                           | —                        | Allows easy and accurate 1/4 - 2 gpm flow rate adjustment to each circuit by simply reading the flow rate on the integral graduated scale. Simplifies and speeds up circuit calibration without cumbersome reference graphs.              |
| Manifold casting indents and offset brackets   | ■                  | —                           | —                           | —                 | —                           | —                        | Narrow profile permits in-line 'tubing-to-fitting' runs and allows nesting of PEX for flush mounting inside 2x4 or 2x6 wall cavities.   |
| Universal self-adjusting diameter PEX and anti-galvanic PEX-AL-PEX fittings for all pipe brands  | ■                  | NO                          | NO                          | NO                | NO                          | NO                       | Self-adjusting diameters accommodate slight PEX variances from different manufacturers, are corrosion resistant, and have no connection leaks with any ASTM dimensional compliant tubing.   |
| Broad PEX and PEX-AL-PEX piping size compatibility: 5/16" - 3/4"   | ■                  | ■                           | —                           | ■                 | —                           | —                        | Provide more PEX sizing flexibility and compatibility with all PEX pipe brands meeting ASTM dimensional standards.  |
| Shutoff Ball Valves with Gage Port   | ■                  | Optional                    | ■                           | —                 | ■                           | —                        | For temperature gage. Knowing flow rate and temperature, BTU can be calculated.   |
| Manual open/automatic return for individual circuits with optional Caleffi Twistop™ actuators  | ■                  | NO                          | NO                          | NO                | NO                          | NO                       | Purge and fill each circuit without taking off the actuators by manually opening the return manifold shut-off valve. System commissioning and electrical check is simple and quick. Refer to Caleffi Sell Sheet SS-101.                   |
| Optional Differential By-Pass  | ■                  | —                           | ■                           | —                 | ■                           | —                        | Maintains constant flow through each circuit as actuators cycle. Simplifies by-pass piping when required.   |
| Pre-assembled standard manifolds complete with automatic air vent and fill/drain valve on supply and return manifolds, adjustable brackets | ■                  | Automatic air vent optional | Automatic air vent optional | —                 | Automatic air vent optional | —                        | Easy specification, ordering, and installation with peace-of-mind quality for ultimate customer satisfaction. Speeds installation time and assures a quality system. Automatic air vent closes automatically when water is near the vent. |



**208-798-4449**

For detailed specifications, visit us at: [www.caleffi.us](http://www.caleffi.us)

Caleffi North America, Inc.  
3883 W. Milwaukee Rd., Milwaukee, WI 53208  
Tel: 414.238.2360, Fax: 414.238.2366

